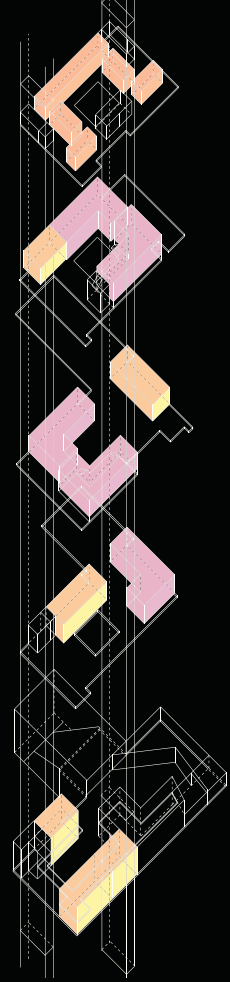




## VIRGINIA TECH GRADUATE SCHOOL OF ARCHITECTURE Relocation To Roanoke, Virginia

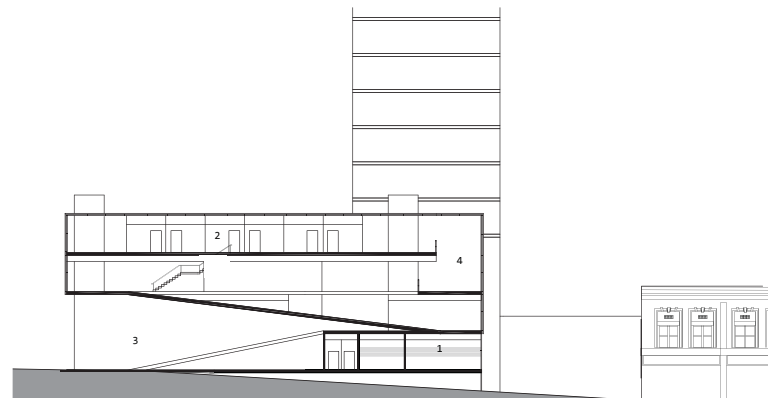
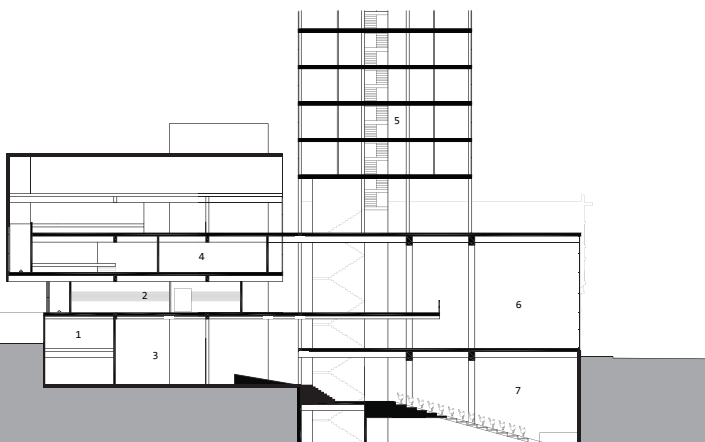


exploded axonometric

Essentially relocating the Graduate School of Architecture from Virginia Tech's campus to downtown Roanoke, this project called for not only the design of the ideal architecture school, but also a building that would respect the downtown character. The translucent façade of Salem Avenue offers a calming resolution to the chaotic presence of the Taubman Art Museum across the street. Still accepting light for the classrooms within, from the street the façade provides privacy for the students and faculty and shadows play on its surface.

The studios are separated into discrete spaces, each comprised of two classes of students, allowing for the perfect balance between an independent working environment and communication with peers. The discrete, shifting, volumes easily accommodate a sloping façade that elegantly resolves the existing grade of the site. The slope of the façade is continued into the ground and basement levels into an open park and gathering space for the shared theatre.

Counterpointing the expressive massing of the architecture building is a slender residential tower that houses the graduate students. Each unit houses 4 students with kitchen, living and laundry spaces. The units mimic the shifting volumes of the architecture building with each zone on its own plane. There are two units per floor, allowing for each unit to receive light on three facades. The tower at 12 stories acts as a marker for the corner of downtown Roanoke.



transverse section  
1.print lab 2.studio 3.cafe plaza 4.classroom 5.residential tower 6.lobby and gallery 7.theatre

longitudinal section  
1.studio 2.offices 3.gallery 4.atrium