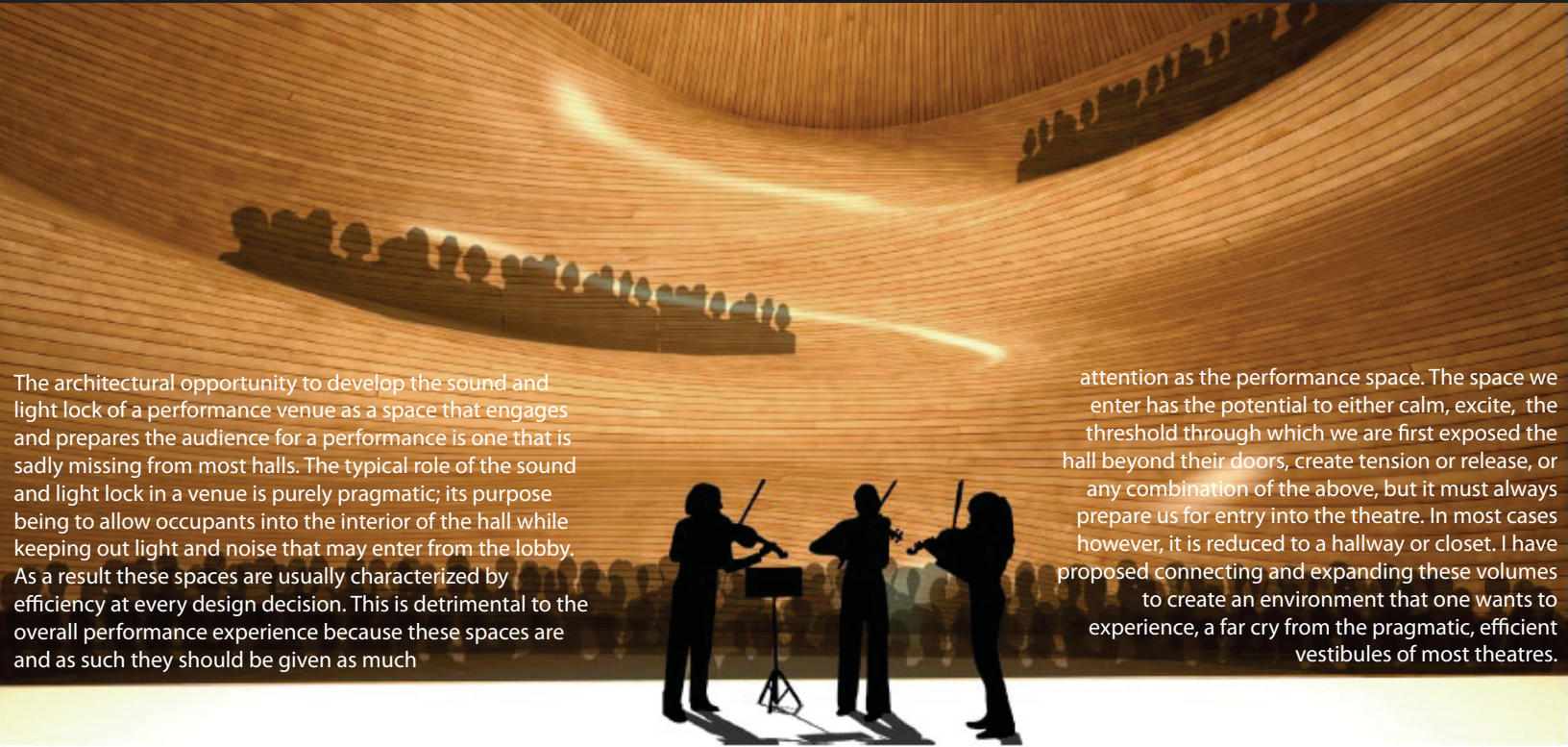


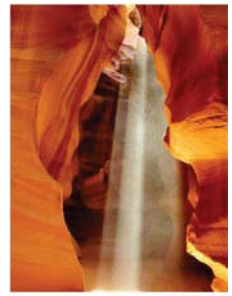
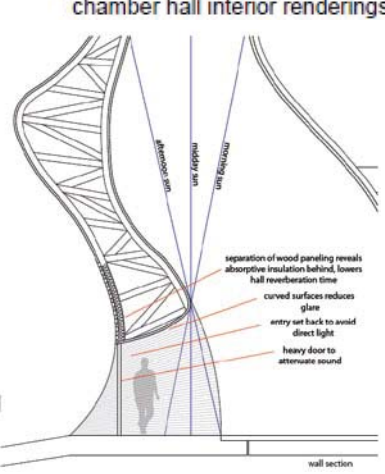
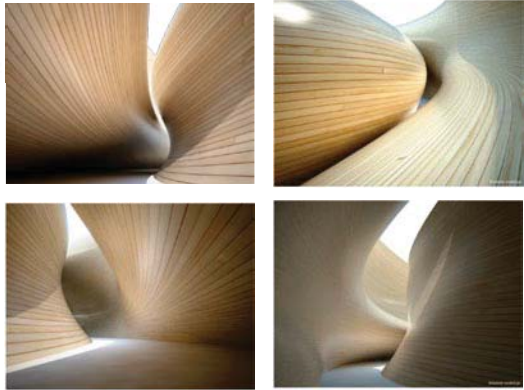
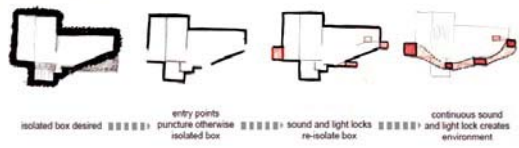
CANYON THRESHOLDS:

chamber hall and artist-in-residence apartments for a private home in westchester county

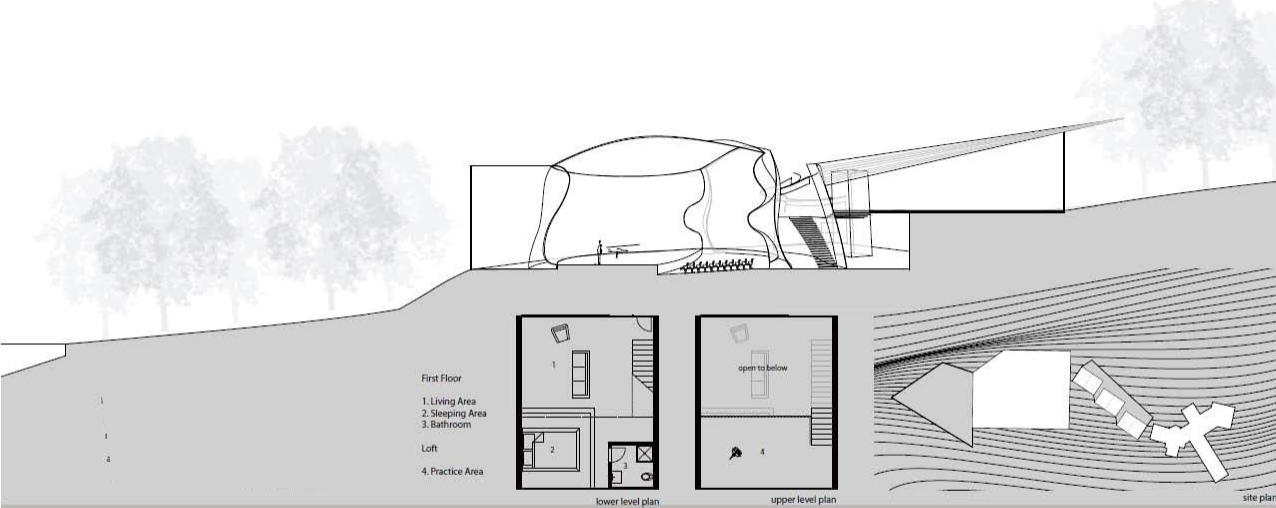


The architectural opportunity to develop the sound and light lock of a performance venue as a space that engages and prepares the audience for a performance is one that is sadly missing from most halls. The typical role of the sound and light lock in a venue is purely pragmatic; its purpose being to allow occupants into the interior of the hall while keeping out light and noise that may enter from the lobby. As a result these spaces are usually characterized by efficiency at every design decision. This is detrimental to the overall performance experience because these spaces are and as such they should be given as much

attention as the performance space. The space we enter has the potential to either calm, excite, the threshold through which we are first exposed to the hall beyond their doors, create tension or release, or any combination of the above, but it must always prepare us for entry into the theatre. In most cases however, it is reduced to a hallway or closet. I have proposed connecting and expanding these volumes to create an environment that one wants to experience, a far cry from the pragmatic, efficient vestibules of most theatres.



The canyons of the American southwest have served as a natural source of inspiration for the venue. Their shapes naturally filter light in dramatic fashion, and one must wind through their crevices, the unknown at every turn.



Artist- in-Residence Housing

A series of loft style apartments line a path from the main house to the chamber hall green rooms. Each unit consists of a double height living room, an elevated sleeping area on the lower floor, and an open practice room on the upper level. STC-52 walls separate the units and double paned glass windows with a 3.0 R-value provide thermal and acoustic insulation while still affording a view to the adjacent lake.